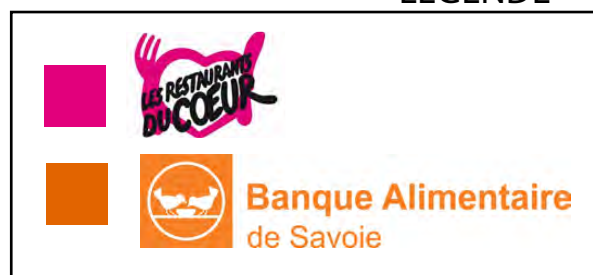
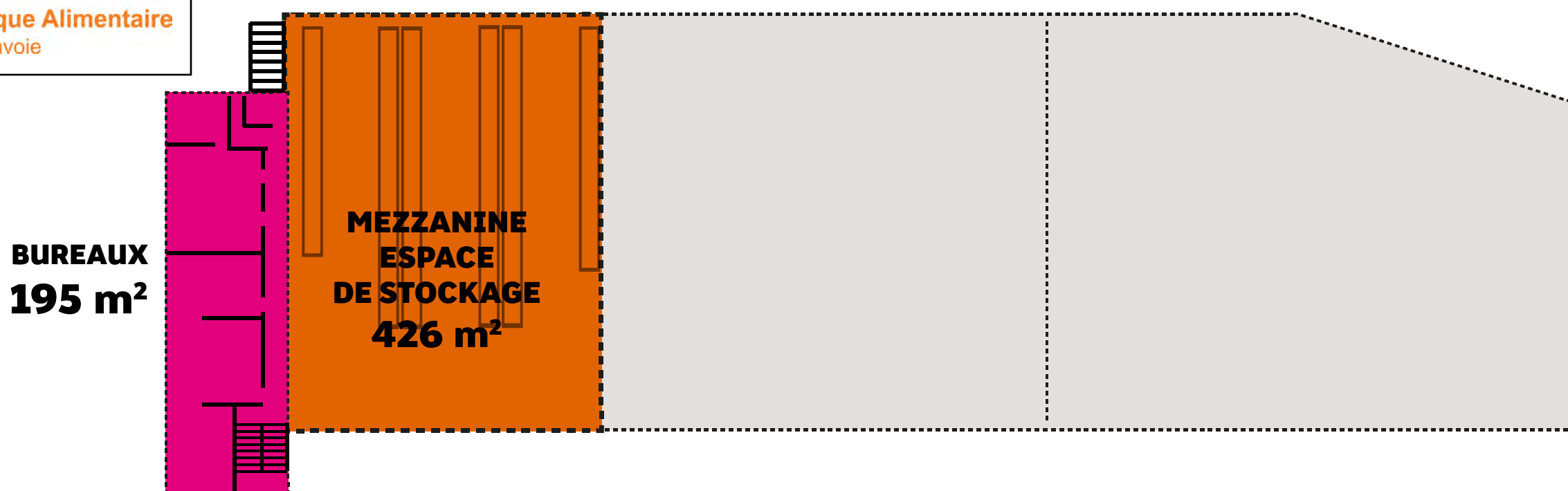


RELOCALISATION ET EXTENSION DES LOCAUX DE LA BANQUE ALIMENTAIRE DE SAVOIE

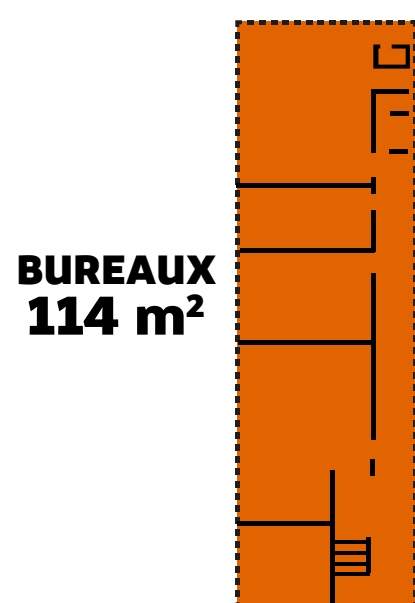
LÉGENDE



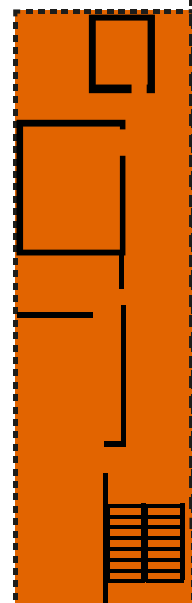
ÉTAGE



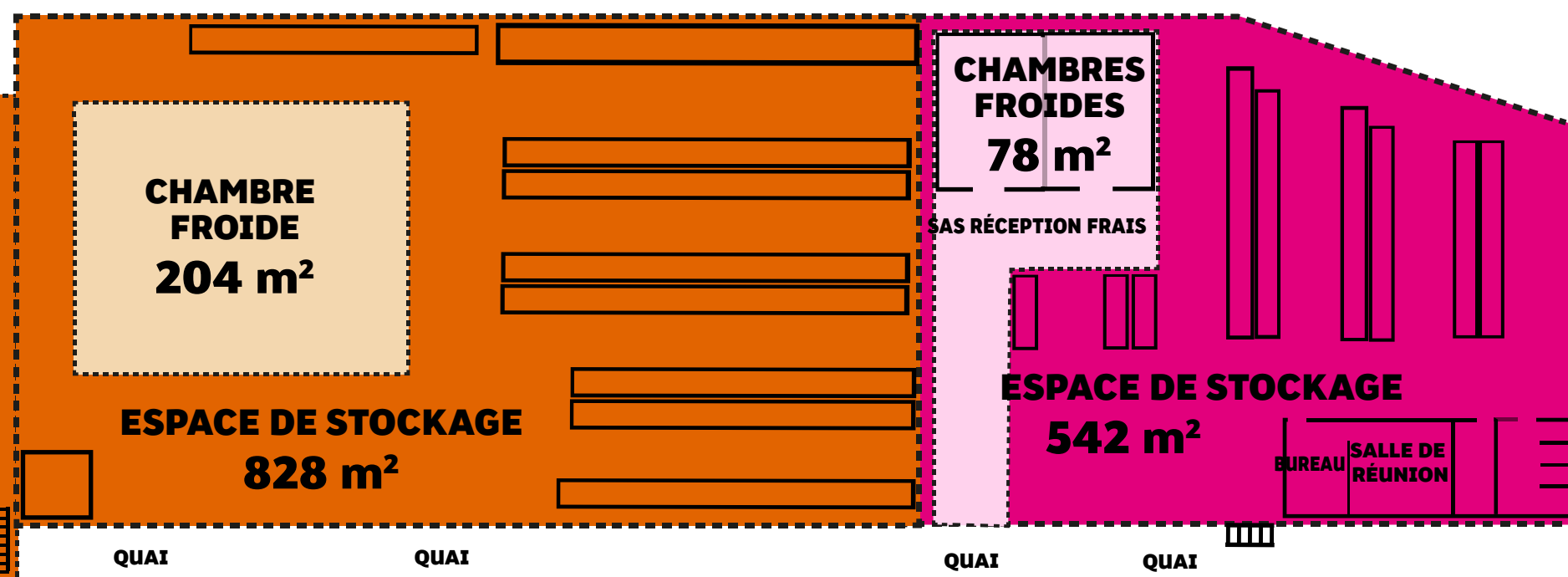
SOUS-SOL



BUREAUX
140 m²



REZ-DE-CHAUSSÉE



BANQUE ALIMENTAIRE

RESTOS DU COEUR

SURFACES TOTALES
APRÈS RESTRUCTURATION

BUREAUX	254 m²	BUREAUX	195 m²
ENTREPÔT	828 m²	ENTREPÔT	542 m²
CHAMBRES FROIDES	204 m²	CHAMBRES FROIDES	78 m²
MEZZANINE	426 m²
SURFACE TOTALE	1 712 m²	SURFACE TOTALE	815 m²

GRAND CHAMBERY
106 allée des Blachères - CS 82618 - 73026 Chambéry cedex
04 79 96 86 00 - grandchambery.fr - @GrandChambery - cmag-agglo.fr